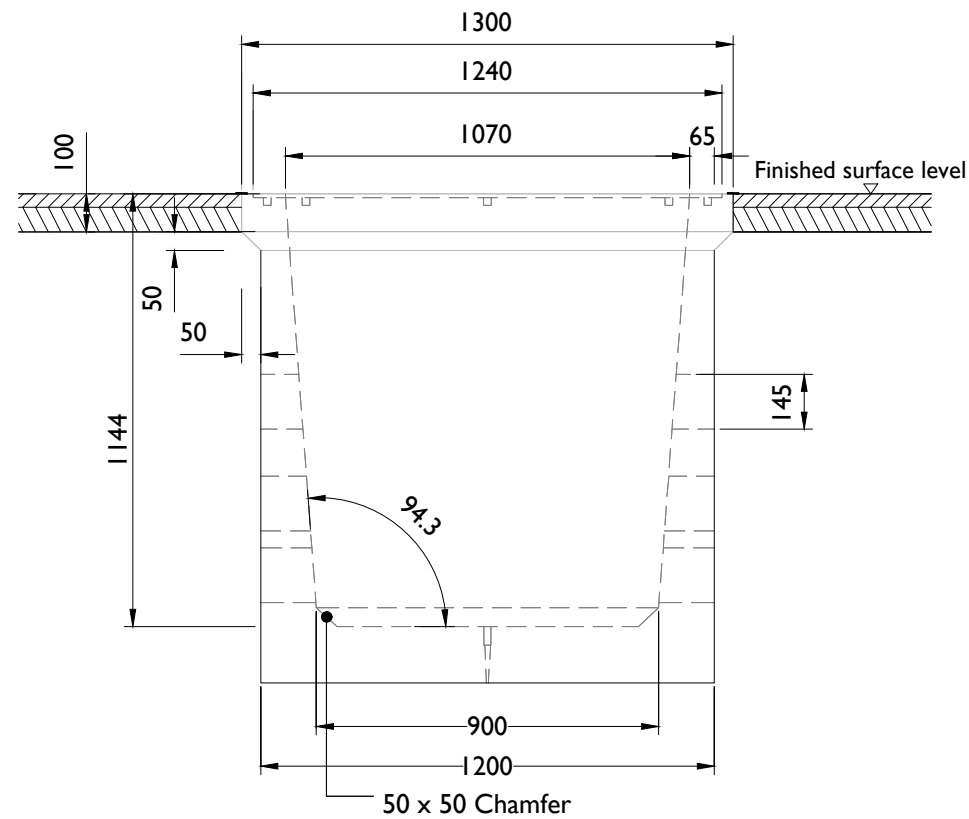


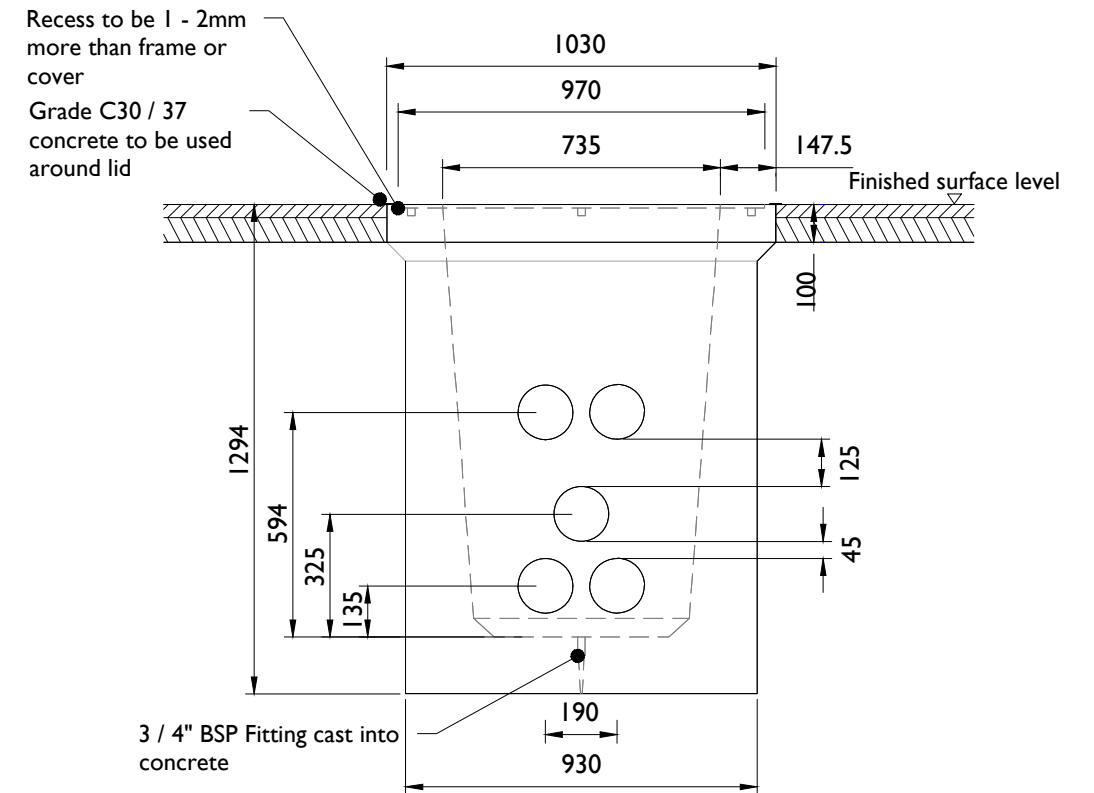
NOTES:

1. This drawing is to be read in conjunction with relevant drawings, specifications and reports.
2. Dimensions are in millimetres, unless noted otherwise.
3. Drawings are not to be scaled use figured dimensions only.
4. Reinstatement to comply with requirements of the relevant local Authority/Asset owner
5. Entrance & Exit ducts to be in line
6. All material and workmanship to be in accordance with the NRA./TII specification for Roadworks, May 2005 and subsequent revisions
7. Reinforced concrete to be a minimum grade C32/40, Sulphate resisting cement to be used where aggressive soil conditions apply, refer to table 6.1 of B.S. 8110.
8. Carraigeway covers and frames to be to B.S. 124.
9. All covers to have ESB logo incorporated in them to the approval of Eirgrid
10. Step irons to be hot dipped galvanised to B.S. 729 and positioned as shown on any chamber deeper than 700mm on the end remote from any side entry duct.
11. Concrete precast chamber and cover should be tested through a 5 point 40 tonnes vertical static loading test by an independent test company, if required, further details will be provided by Eirgrid.
12. Final position of C2 chambers shall be agreed with Eirgrid.
13. In a forest environment backfill with lean mix outside the cover frame.
14. This drawing is subject to Eirgrid design approval.



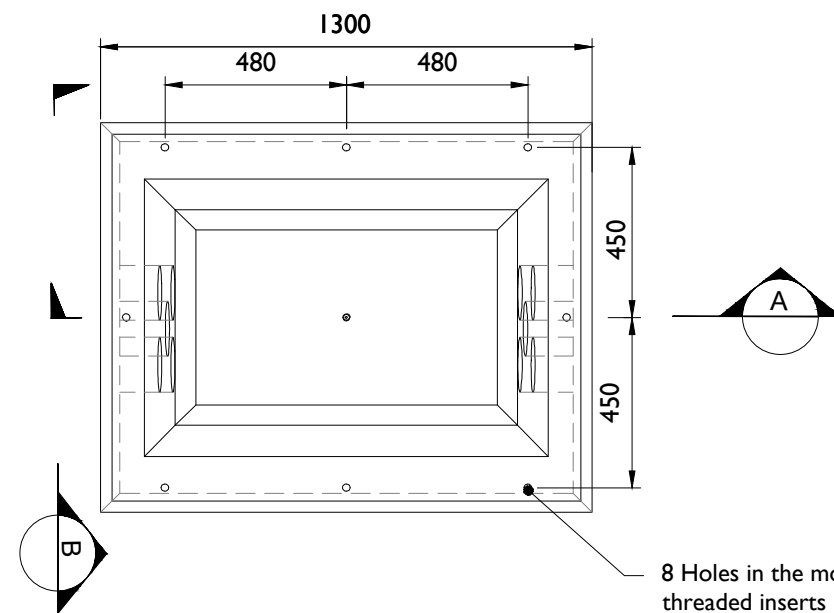
C2 Chamber Detail - Section A

SCALE 1:20



C2 Chamber Detail - Section B

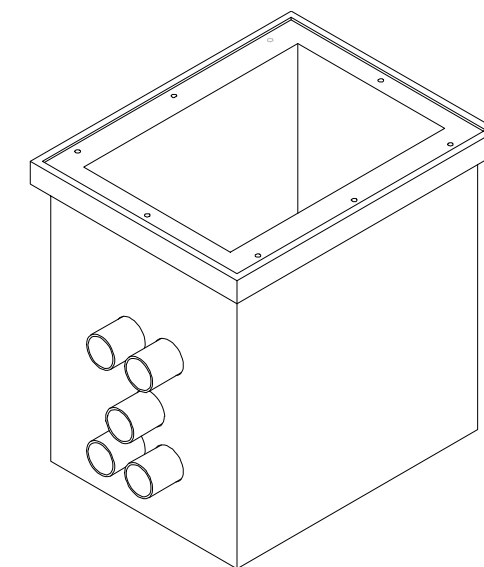
SCALE 1:20



Plan of Chamber

SCALE 1:20

8 Holes in the mould to suit M20 threaded inserts (please check the alignment of all holes)



Isometric : C2 Chamber Arrangement

SCALE 1:20



Head Office
Beenreigh,
Abbeydorney,
Tralee, Co. Kerry
Ireland
Tel: 00353 66 7135710

CLIENT



PROJECT

110kV Baldonnell Substation

PROJECT NUMBER
05-868

SHEET NUMBER
05868-DR-008

SHEET TITLE

Communications Chamber -
Details

DRAWING STATUS
For Planning

ISSUE/REVISION

I/R	DATE	DESCRIPTION
P4	31.05.23	Issued for Planning
P3	19.05.23	Issued for Planning
P2	15.03.23	Issued for Planning
P1	24.02.23	Issued for Planning